



Plastic Safety Systems

RoadQuake 2™

Temporary Portable Rumble Strip Product Guide



Distributed by:

Download PSS
Product Catalog.



“On the Roadway for Safety”®

Temporary Portable Rumble Strips

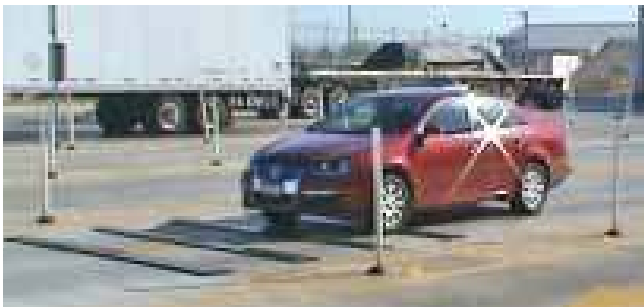
Designed to Reduce Accidents and Save Lives.

Our Rumble Strips Alert Drivers to Changing Road Conditions.



Ideal for work zones where daily installation and removal of the work zone is frequently required:

- Pilot car or flagging operations
- Lane closures
- Traffic safety check-points
- Routine maintenance projects
- Paving operations



Our Rumble Strips are:

Temporary - No nails or glue are needed for installation and use. Quick installation and removal, and no clean-up.

Portable - No installation equipment needed. A crew of 2 can install an array in minutes.

Durable - 3-5 year life under normal conditions. Suitable for use in rain and colder temperatures.

Visit our
Rumble
Strip Page.



Watch
RoadQuake
Videos on
YouTube.



For Use In:

Posted Speed Limits:
Temperatures:

RoadQuake 2™

75 MPH or less
from 0 to 180° F



RoadQuake 2 is 45" long. 3 sections make 1 rumble strip, 11' long when assembled, to traverse an entire lane. Generates the same level of sound and vibration as milled strips, and higher levels than glue-down strips. Measures 45" long X 13" wide X 3/4" thick. Weighs only 35 lbs. Ideal when transport and storage space is limited. Fits in virtually any vehicle. Features beveled edges on both sides for easy installation.



RoadQuake 2 is easy to transport and store.



*Assembles in minutes. No tools required.
For complete assembly instructions, see pages 4 & 5.*



3 sections make 1 strip, 11' long, that traverses an entire lane.



*Installs in minutes. No glue, adhesives or nails required.
No tools or equipment needed.*

Watch the
YouTube
RoadQuake 2
Assembly Video.



Download
the PSS
RoadQuake 2
Product Guide.



US Patent No. 7,736,087, Other Patents Pending

How to Assemble RoadQuake 2 Sections

RoadQuake 2 is a temporary device; no glue, adhesives or other fasteners are required for installation. RoadQuake 2 simply conforms to the surface of the road.



Prior to assembly or installation, sweep areas clear of gravel and other debris that may cause strips to move.

The only tool you will need for assembly is a 4x4 piece of wood, or an object of similar size.



Tabs and Slots:

RoadQuake 2 is ready-to-assemble. No hardware is required.

In the picture to the left, the section on the left is the “tabbed” section; the section on the right is the “slotted” section.

Note that both long edges are beveled, so that either edge can face traffic.

The Goal of Assembly is to Properly Engage Tabs with Slots:



The channel under the tabs, shown in Picture 1...



...must engage the rod on the slotted end, shown in Picture 2.

Assembly Steps (from our Video!)



Put the 4x4 under the slotted end of the first section.

The wood will **ELEVATE** the slotted end.

Next, pick up the second section with the tabbed end down and nameplate facing you.

Straddle or stand next to the elevated section.



INSERT the tabbed end into the elevated slotted section.



ENGAGE the rod on the slotted end.



KICK the section in your hand to fully engage the channel on the rod.

Kicking Style
Picture 4 shows a sideways, soccer-style kick, using the instep of the foot. Straight-on, football-style is also acceptable. Simply straddle the section on the ground, insert and engage the section in hand, and kick straight-on, in football-style. Then proceed to Steps 5, 6 and 7.



Slowly **DROP** the section...



REMOVE the wood and...



STOMP on it, to complete the assembly.

You can now add a third section to make a full 11 foot strip that spans an entire lane.

Watch the YouTube
RoadQuake 2
Assembly Video!



Results: This....



Properly assembled sections should be smooth and flat, as shown in the picture above.

....Not This...



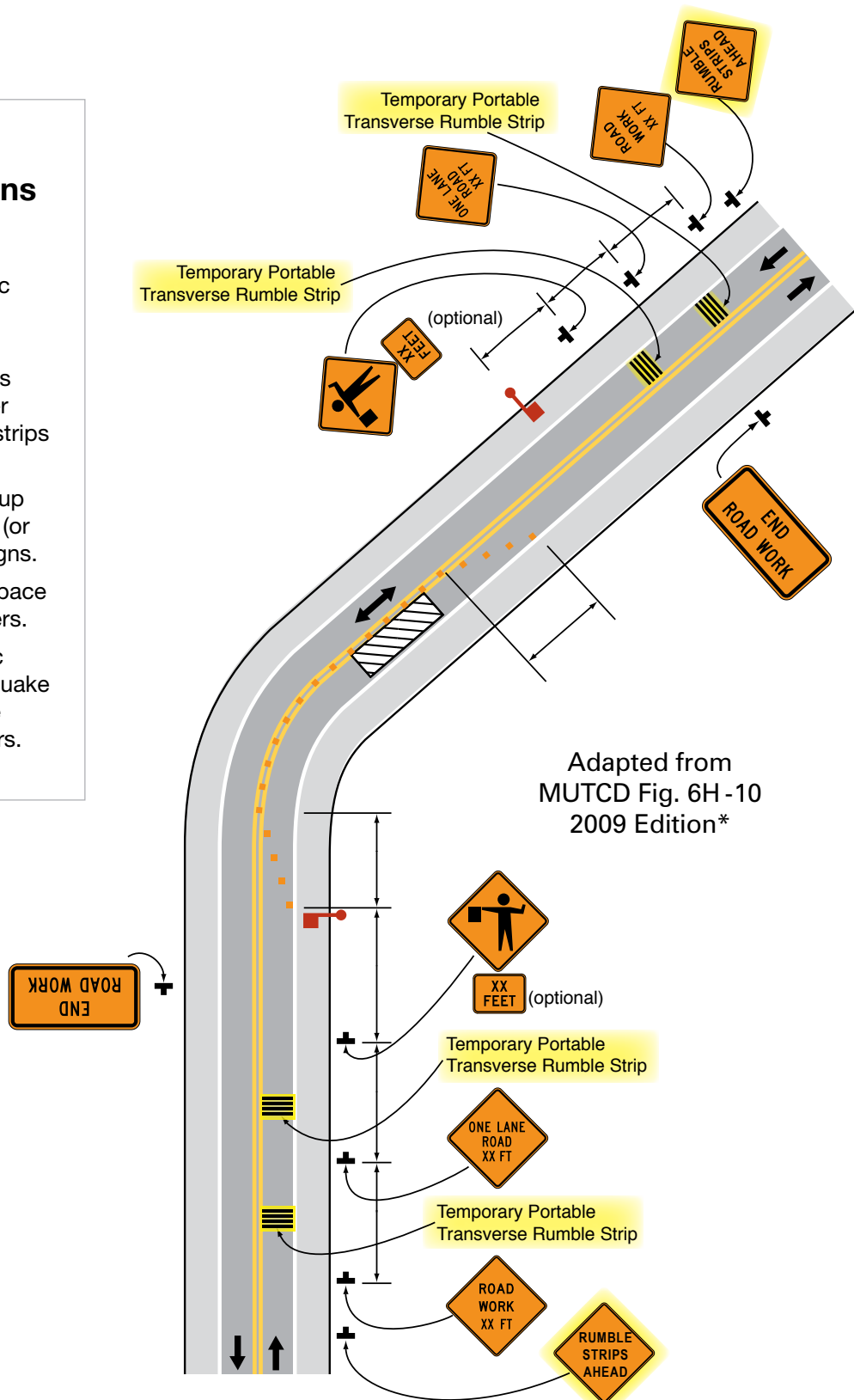
These sections have not been assembled correctly. Please repeat the assembly steps. But first, watch the video!

PSS Recommended Lane Closures

Two Lane Road with Flaggers and Temporary Portable RumbleStrips

Installation Recommendations

- Follow State DOT specifications and traffic control plans.
- Prior to assembly or installation, sweep areas clear of gravel and other debris that may cause strips to move.
- Prior to installation, set up "Rumble Strips Ahead" (or similar text) Warning Signs.
- At time of installation, space strips on 6' to 10' centers.
- Like all temporary traffic control devices, RoadQuake rumble strips should be checked every few hours.



Download the
PSS RoadQuake 2
Product Guide.



* PSS modified MUTCD Figure 6H-10 to include temporary rumble strip arrays and temporary "Rumble Strips Ahead" signs, which are highlighted in yellow. Neither the arrays or the signs appear on the original MUTCD drawing.

RoadQuake is Road Safety Reinvented!

Special Applications

Permanent Check Point Application



A federal agency had observed several near-miss accidents just beyond their permanent check-point, where there is an entrance ramp to a highway.

Drivers would accelerate out of the checkpoint lanes and race to the entrance ramp. The agency decided to slow traffic in at least 1 of the 5 lanes; 1 lane of slower traffic would create the desired “zipper” effect of merging traffic.

The agency did not want to close any lanes, nor install permanent roadway hardware, as traffic ebbs and flows constantly.

They tested RoadQuake, a temporary device for one week, in different lanes. The agency concluded that RoadQuake allowed drivers to merge safely, and in time to enter the highway.

Pedestrian Safety Application

A busy street next to a Major League ball park sees an incredible amount of pedestrians as fans cross it to and from games. Also, drivers access parking garages from it.

To improve pedestrian safety, the sports complex managers sought to reduce drivers' speeds. They wanted to install and remove devices before and after games, which ruled out permanent devices, and led to RoadQuake.

To ensure pedestrians could see the strips at night, managers requested that we place reflective material on the strips.

After a test over several games, management decided that RoadQuake performed effectively. Drivers slowed down, and pedestrians did not trip over the strips at night.



2-in-1 Application

To fulfill a customer request to provide reflectivity for drivers, PSS engineers installed pavement marking tape on sections of RoadQuake 2.

As an added benefit, they installed the tape at the assembly point of RoadQuake 2, where the tabbed end fits into the slotted end.

The benefit is this: customers can purchase RoadQuake 2 Rumble Strip, a modular device, but tape them together to form an 11' strip. The user can transport and install the 11' version as long as desired. To return the strips to their original size, the user simply can remove the tape.

Initial customer feedback is promising, proving that:

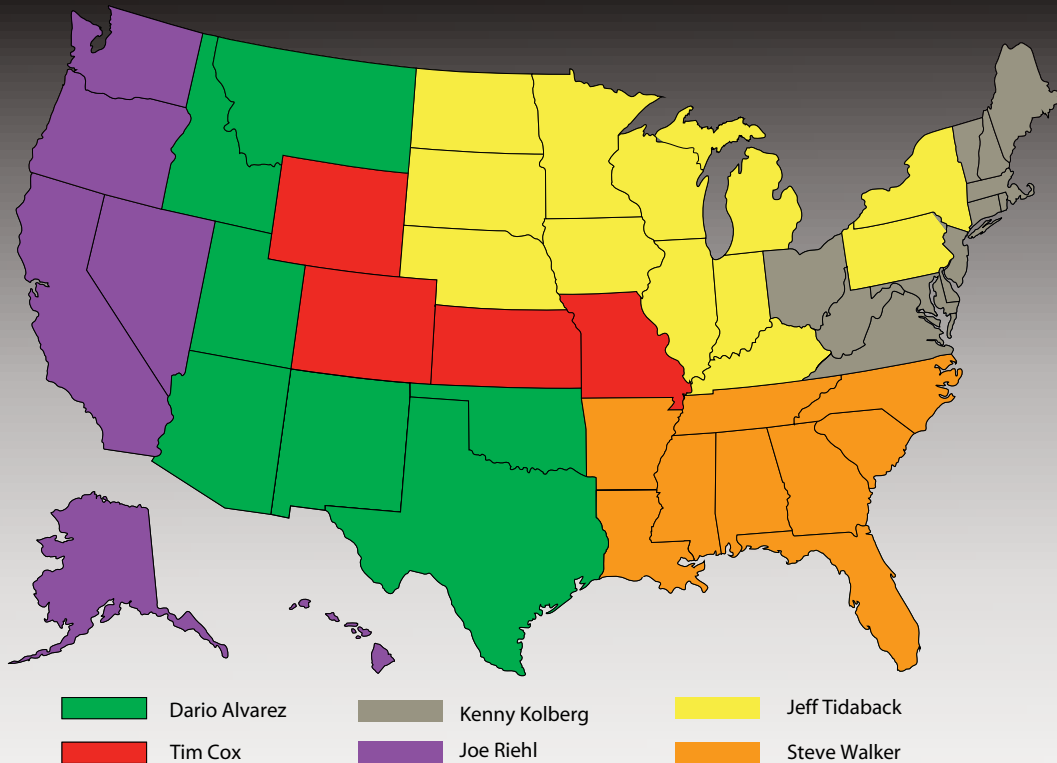
RoadQuake 2 is Road Safety Reinvented!



Patent Pending



PSS Sales Representatives



Tim Cox — National & Int'l Sales Manager
Plastic Safety Systems
Blue Springs, Missouri
Cell: 216-244-3207
Email: tjcox@plasticsafety.com

Joe Riehl — Representative
Capitol Barricade, Inc.
Sacramento, California
Cell: 916-719-5125
Email: jariehl@aol.com

Dario Alvarez — Regional Sales Manager
Plastic Safety Systems
Round Rock, Texas
Cell: 216-409-6032
Email: dealvarez@plasticsafety.com

Jeff Tidaback — Regional Sales Manager
Plastic Safety Systems
Arlington Hts, Illinois
Cell: 216-409-6842
Email: jatidaback@plasticsafety.com

Kenny Kolberg — Regional Sales Manager
Plastic Safety Systems
Perry, Ohio
Cell: 216-280-5566
Email: kakolberg@plasticsafety.com

Steve Walker — Regional Sales Manager
Plastic Safety Systems
Acworth, Georgia
Cell: 216-409-6468
Email: smwalker@plasticsafety.com



CUSTOMER & TECHNICAL SUPPORT

Plastic Safety Systems, Inc.
2444 Baldwin Rd. Cleveland OH 44104
800-662-6338
www.plasticsafety.com



Contact sales
staff online.